



THE EXPERIENCE

\$6,500 per two people
double or twin share.

- *Two nights luxury accommodation at the sensational Finnis River Lodge.*
- *All inclusive five star meals and beverages.*
- *One full days guided estuary fishing.*
- *Lodge tours and experiences.*

Valid - Oct - Dec 22 & March - May 23



FISHING



Upgrades available:

- One extra nights accommodation \$1,800
- One extra day fishing with Dorian \$1,800
- One extra half day Heli fishing with Matt Wright's Adventures \$2450

At Finnis River Lodge, we integrate your fishing experience seamlessly into the remainder of your stay. From providing a gourmet breakfast before you head out for the day, to a stunning packed lunch, our service and luxury travels with you on the water.

Our Guide – Barramundi Adventures

On the river, in the estuary, or out to sea, your expert skipper and fishing guide is Dorian Rondot, born and bred Territorian who reeled in his first barramundi at the age of 4. Having spent every childhood weekend fishing with his Dad, Dorian knows the waters in this region and all of it's hidden gems like no one else. Aside from running a land-based barramundi farm, Dorian guides discerning clients on bespoke half or full day fishing charters in his customized 6.5 metre Boston Whaler. He has worked on the water all his life, turning his passion into a livelihood. There is simply no one better qualified to guide you on your angling adventures from Finnis River Lodge.



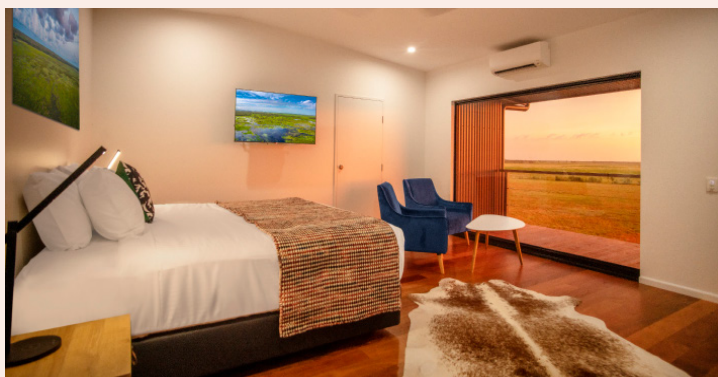
Heli Fishing

Take your fishing adventure to another level with a half day of Heli Fishing with Matt Wrights Adventures. Fly over stunning turquoise coastlines, sandy beaches with crimson cliffs, bountiful wetlands and floodplains alive with wildlife, birdlife and spectacular pristine natural beauty. Arrive at exclusive locations that make this a fishing experience you will never forget. With high quality fishing equipment and an experienced local guide/pilot, the odds are in your favour for an action-packed half day on the water.



The Lodge

The Lodge offers luxury accommodation in just six beautifully appointed, ensuited rooms and delivers a range of engaging guided experiences including wildlife spotting, bush survival, hiking, air boating, fishing and heli flights. The terrain includes floodplains, 15km of coast, the Finnis River, rocky escarpments, savannah, magnetic termite mounds and remnant rainforest.



The property is a working cattle station and offers the opportunity to connect with the station owners and team. The Lodge prides itself on its locally inspired, chef-cooked meals which are tailored to guests' palates and matched to wines carefully selected from all over Australia.

Just a 20-minute charter flight or 90-minute drive from Darwin.